

EFT

Z SERIES

AGRICULTURAL DRONE
SYSTEM SOLUTION



Enjoy the intelligent and smooth ultimate experience with
Z series agriculture drone solution.

30kg and 50kg two load models,
with newly upgraded high-strength truss structure,
wireless integrated flight control,
large-flow impeller pumps and water-cooled centrifugal nozzles.
The aircraft is deep integration of software and hardwares.



Z30



Z50



Integrated
flight control



IntelliSense
feedback



Water-cooled
centrifugal nozzle



High-efficiency
spreading

IP67

Immersion
waterproof



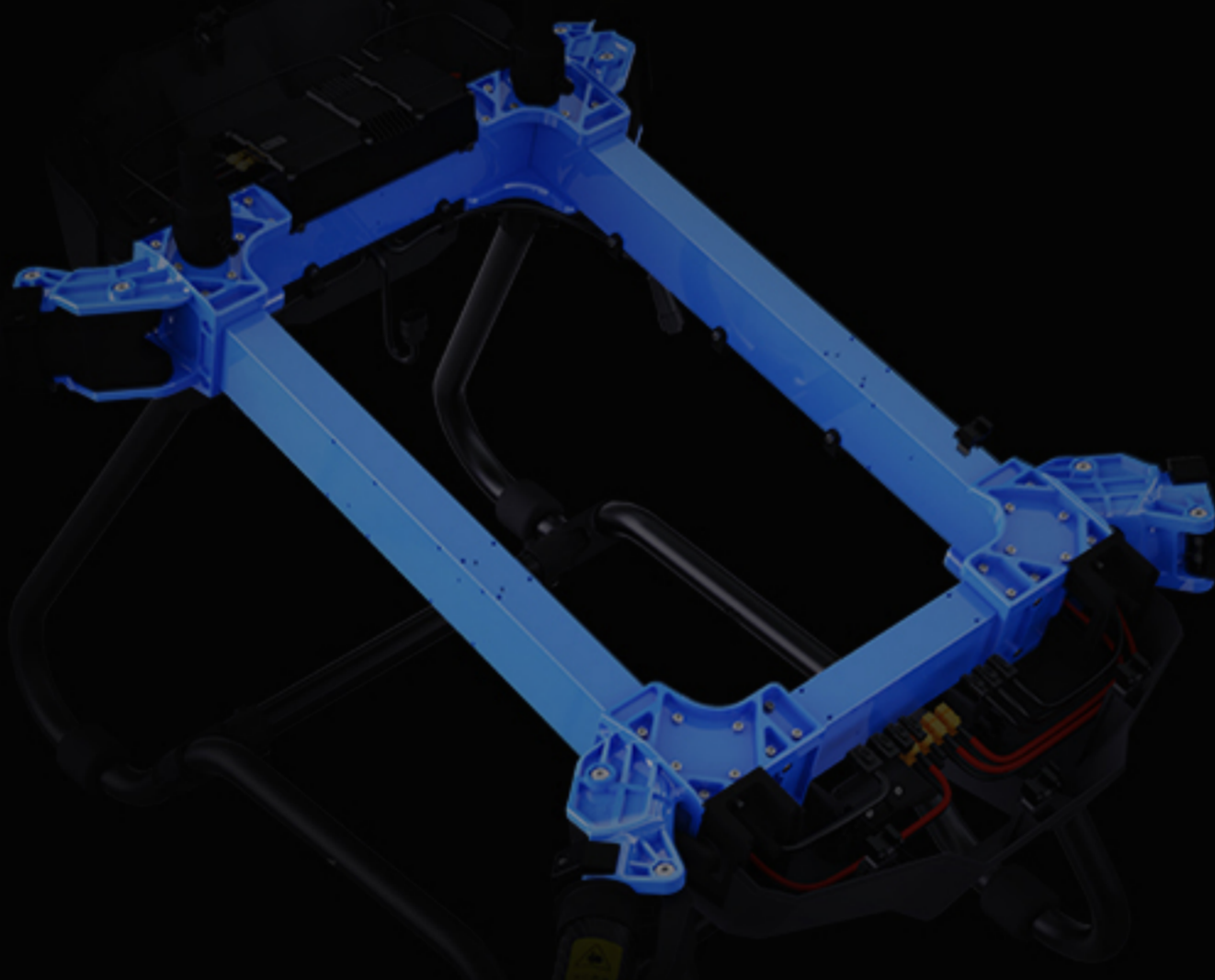
Large flow
double impeller pump

INNOVATING STRUCTURE PURSUING SUPERLATIVE



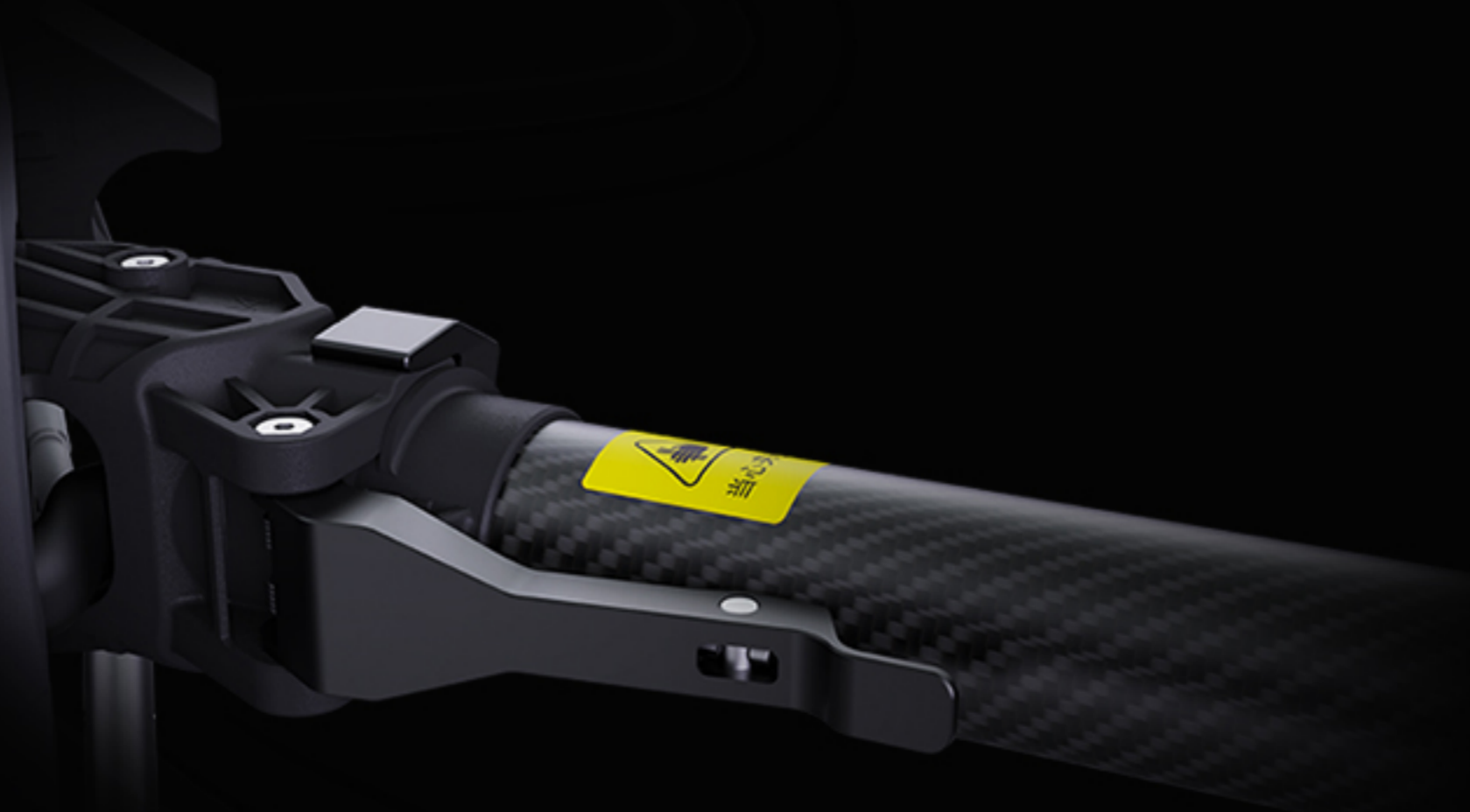
Z-TYPE FOLDING

Minish folding size, Easy transport



TRUSS STRUCTURE

Double structural strength , strong and durable



PRESS-LOCKING HANDLE

Intelligent sensor, convenient operation, sturdy and durable

INTERACTIVE DESIGN NEW EXPERIENCE



DOUBLE CLAMSHELL INLETS

Big dual inlets, easy pouring



TOOL-FREE HOUSING

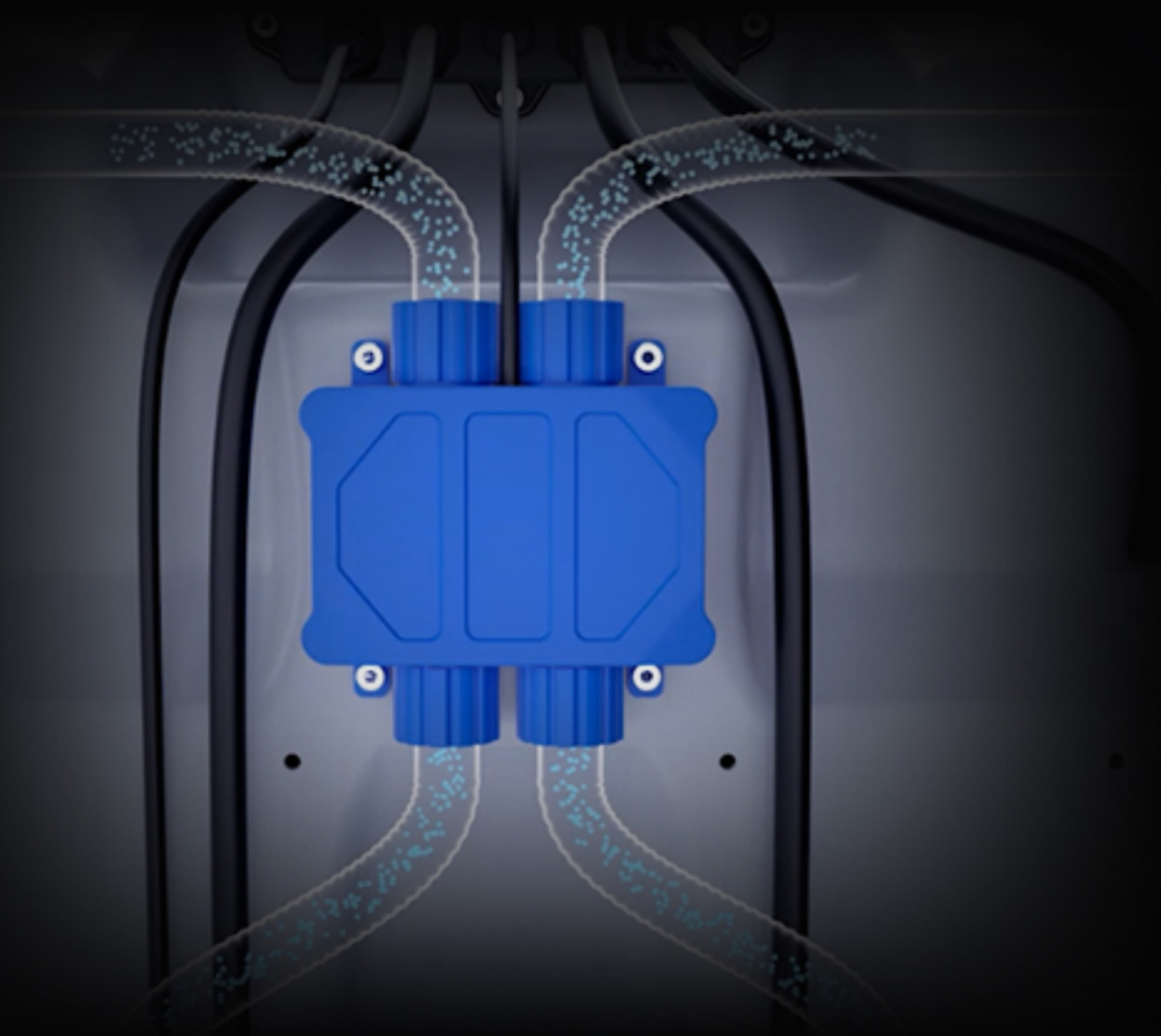
Simple built-in buckle, quick disassembly



FRONT HIGH TAIL LOW

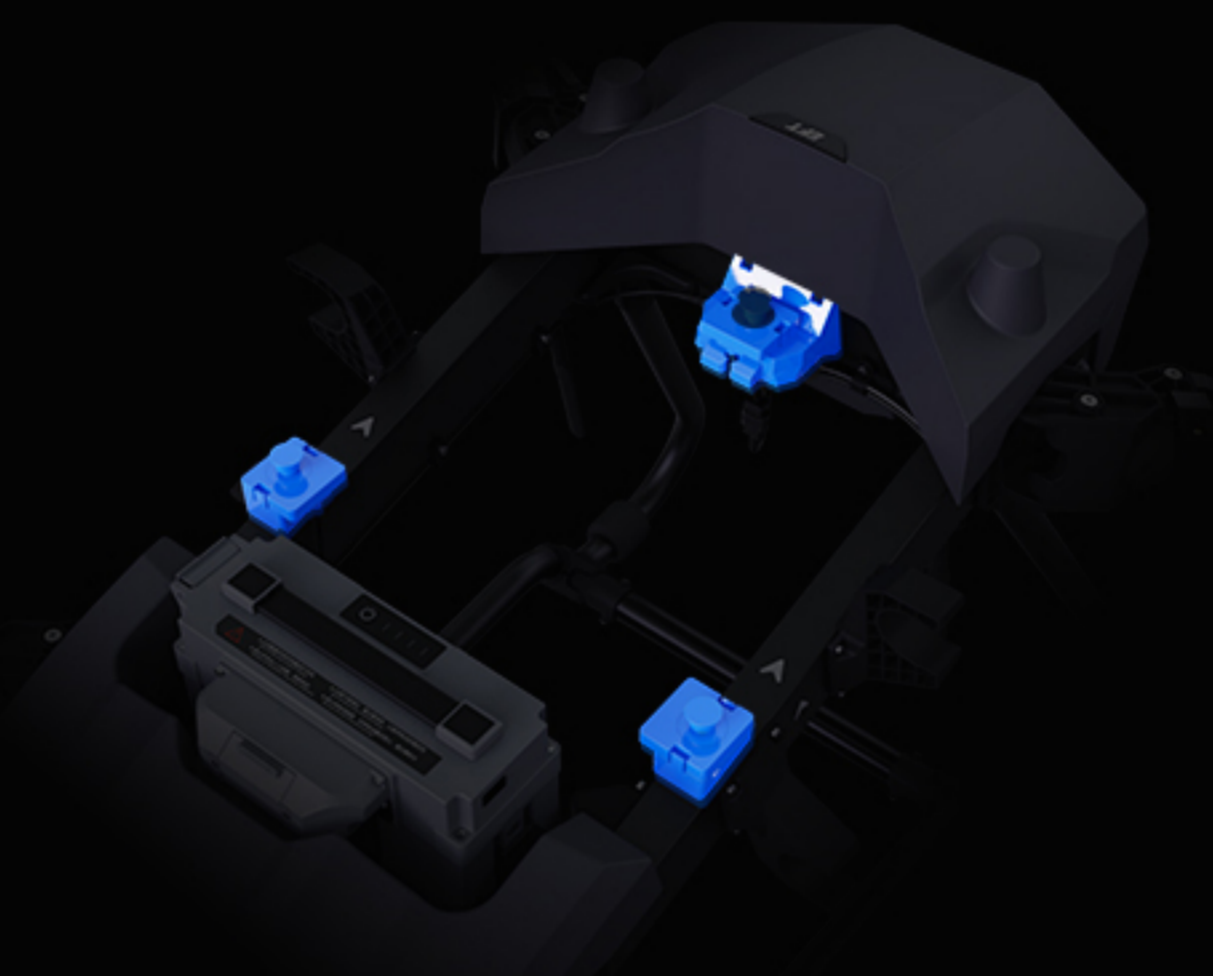
Less wind resistance, lighter battery replacement

FULLY INTERCONNECTION APTITUDE UPGRADE



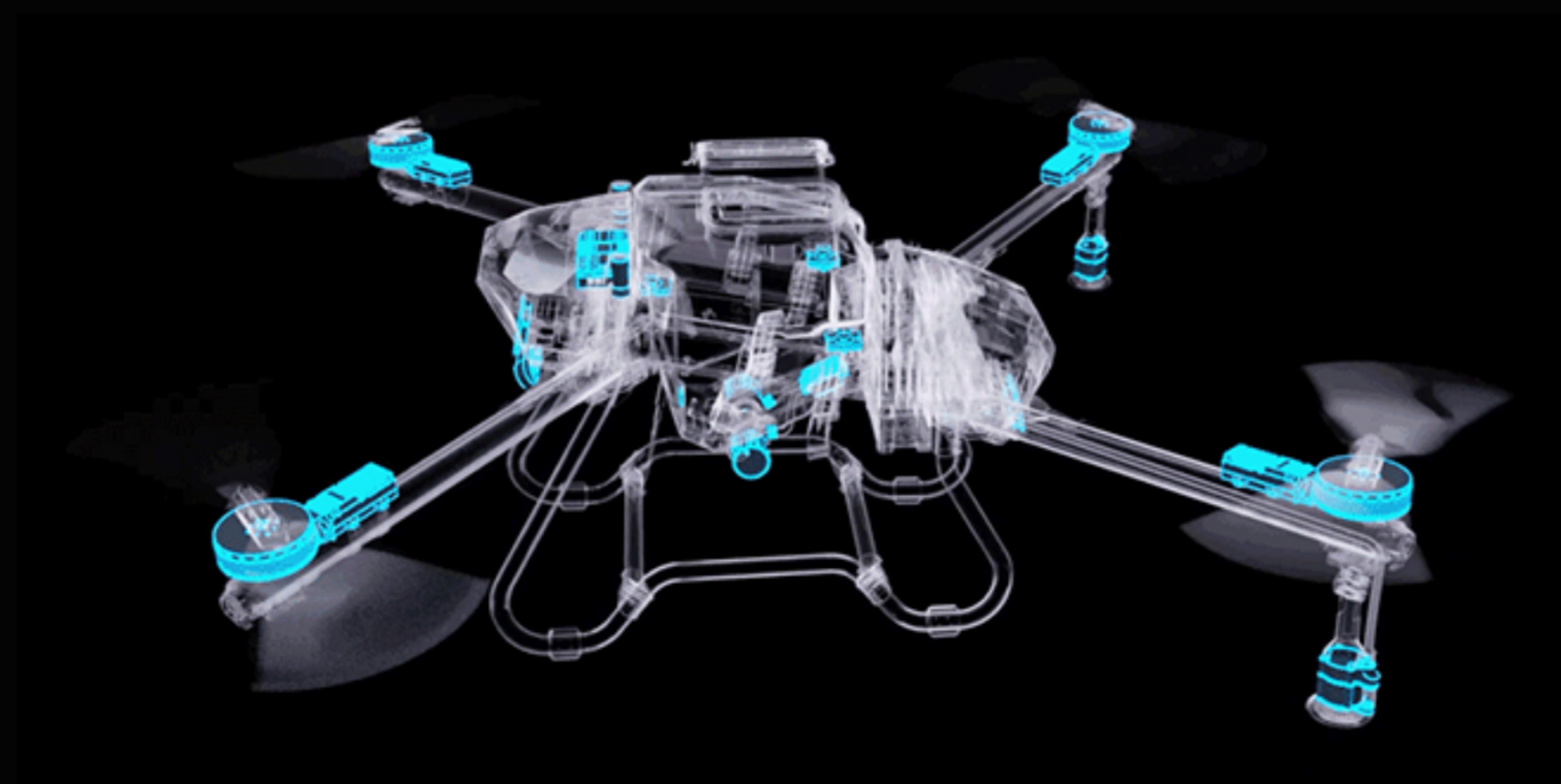
ULTRASONIC FLOW METER

Separating detection Stable and reliable



PRECISE WEIGHING MODULE

Real-time monitoring Avoid overloading



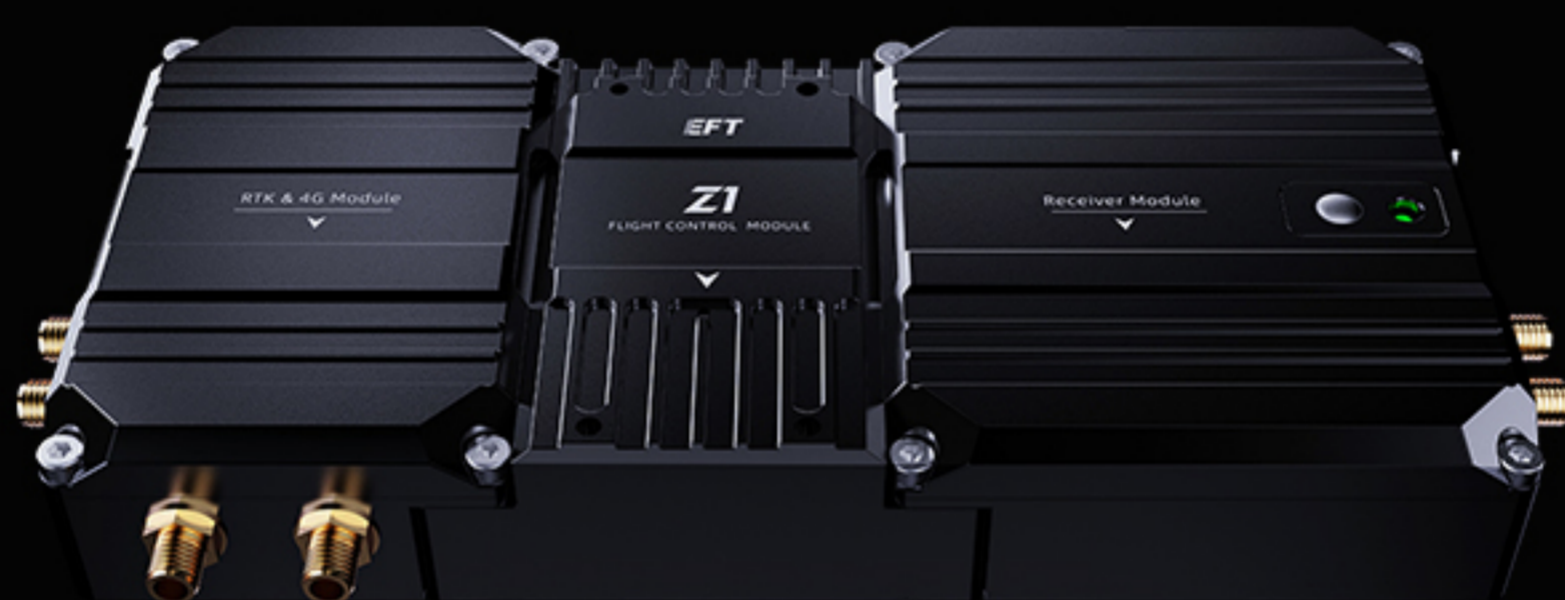
SMART FEEDBACK MODULE

Constantly status detection Early warning of faults



INTEGRATED FLIGHT CONTROL ENJOY WIRELESS CONNECTION

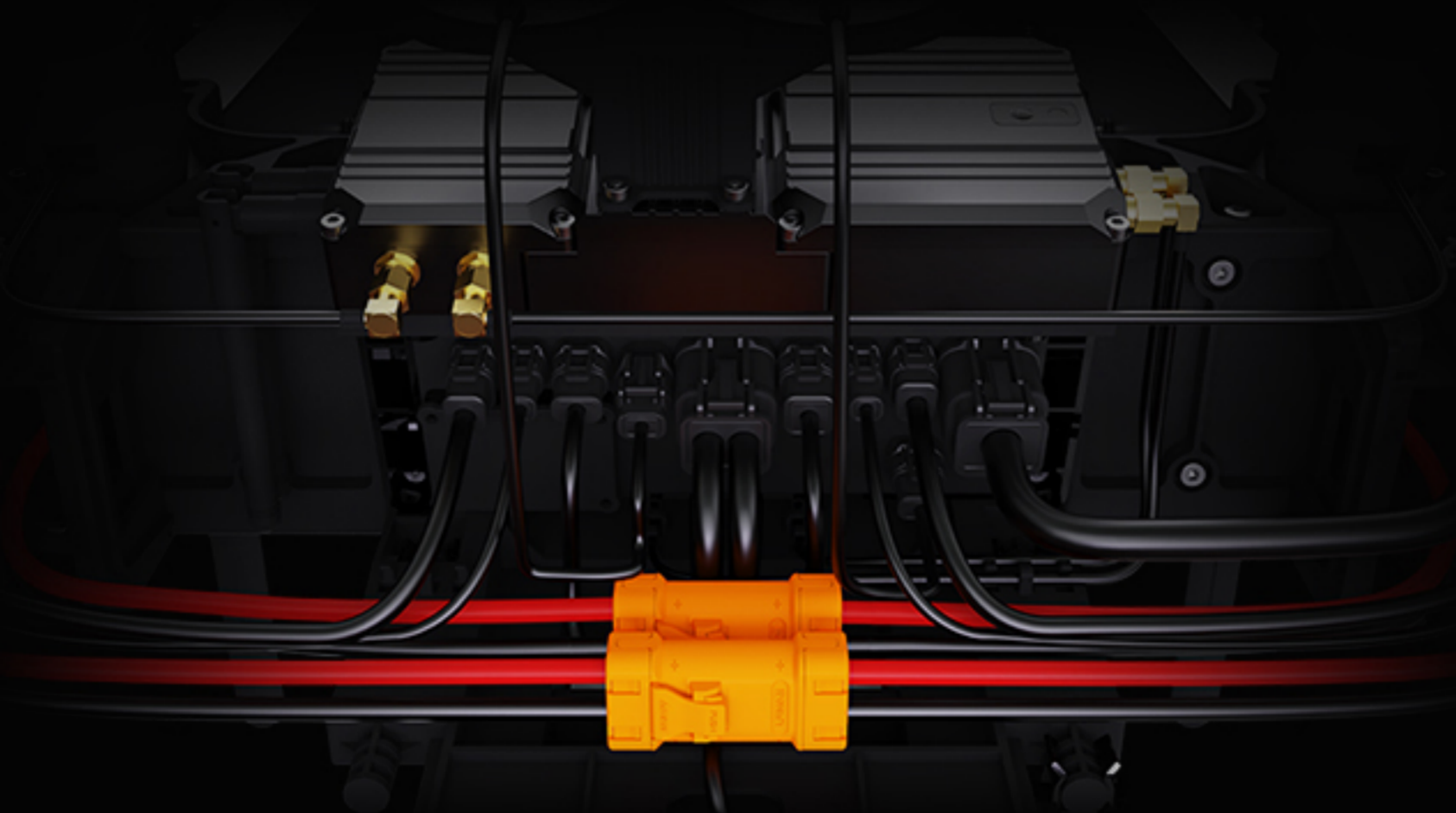
Wiring-free and debugging-free, enabling fast installation



GROUPING MODULAR DESIGN

Separate modules of flight control ,
RTK module and receiver module.

Plug-in connection, flexible configuration



OPTIMIZE ARRANGEMENT UPGRADE WATERPROOFING

Deeply optimized wire layout, orderliness and easy to repair,
optimizing plug with waterproof terminal, more reliable performance

EFFICIENT SPRAYING HEARTY FLOW

Newly spraying system is equipped with dual large-flow impeller pumps. Matching With an ultrasonic flowmeter, which is separated detection from the liquid, more stable and more precise. The ingenious water-cooled centrifugal nozzle can effectively reduce the temperature of the motor and increase the service life, and the large atomization radius brings a new smart spraying experience



PRECISE SPREADING SMOOTH SOWING

Integrated tank design,
quickly change spraying and spreading in one step,
convenient and fast. Super large inlets ,
greatly enhance the loading efficiency.

Bow-shaped tripod design,
effectively avoid the collision of broadcasting particles.
Margin display, realize precise linkage spreading.



IP 67, INTEGRALLY WATERPROOF

The whole drone is upgraded waterproof from the inside to the outside, Motherboard integral potting, plug with waterproof terminal, sealed all core modules, and the whole drone achieves immersion waterproof, easily cope with various harsh working environments.



COMMON STRUCTURE CONVENIENT MAINTENANCE

30L / 50L universal structure ,

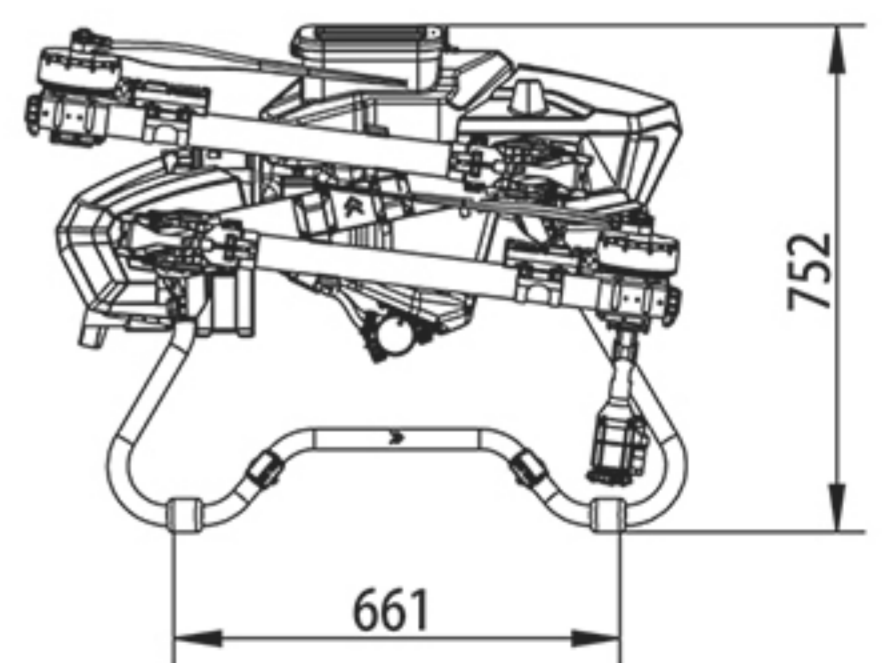
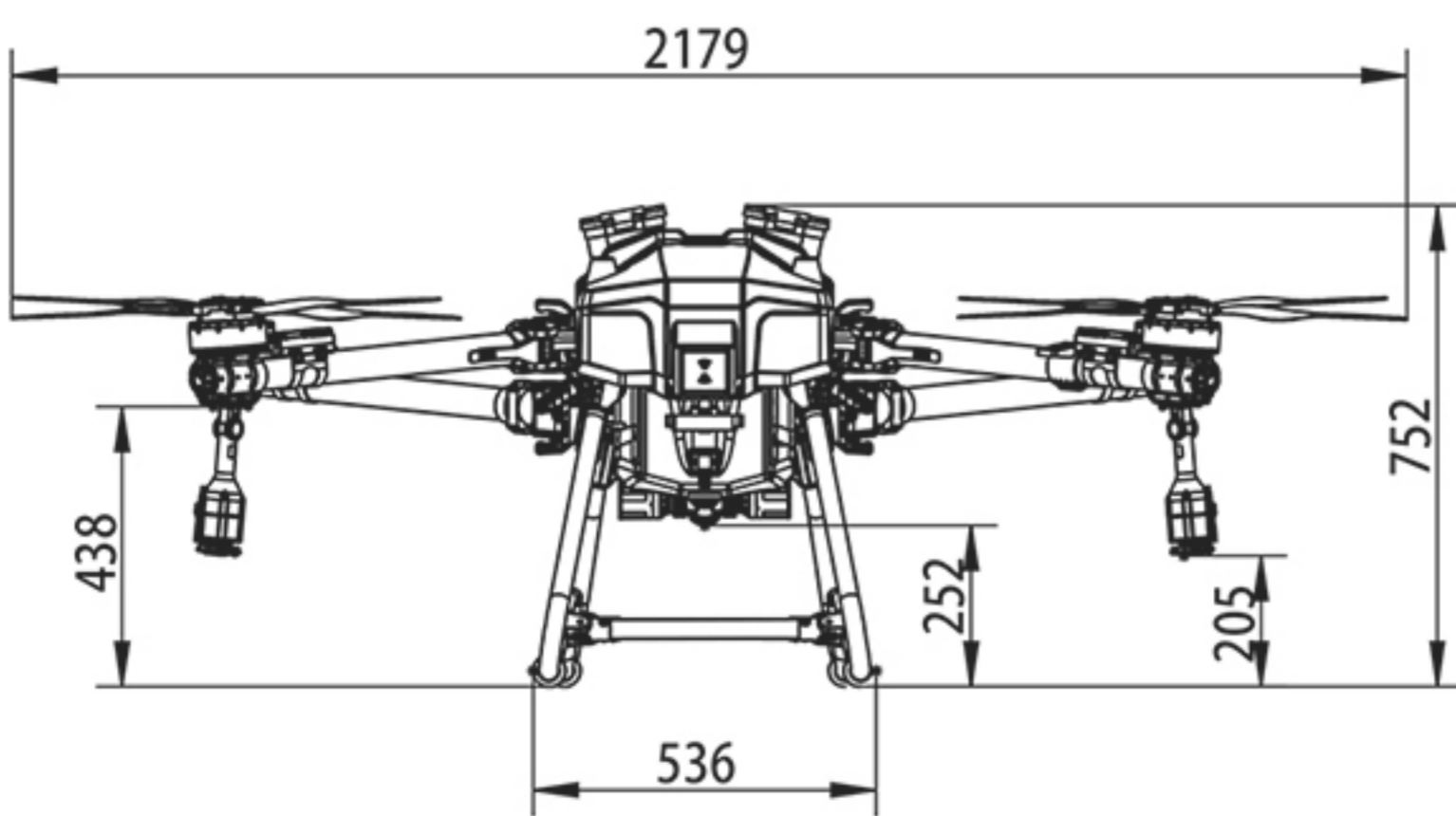
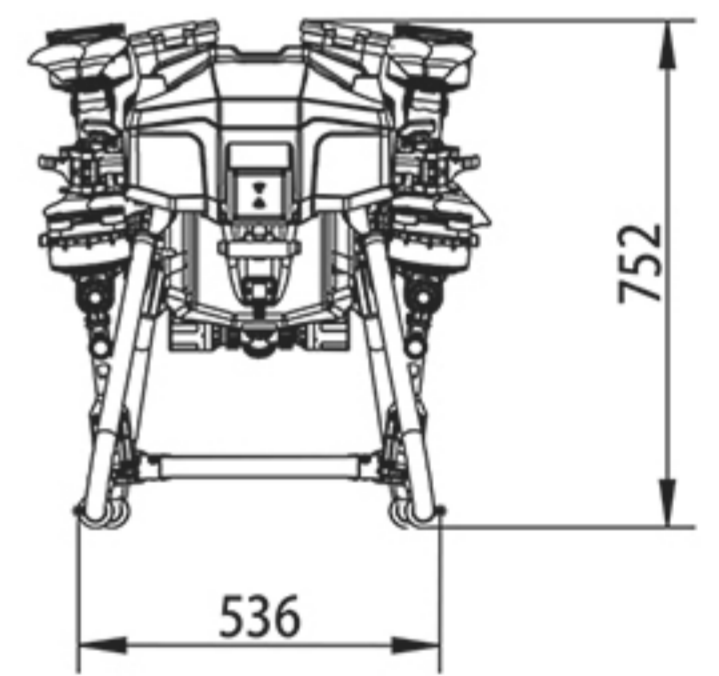
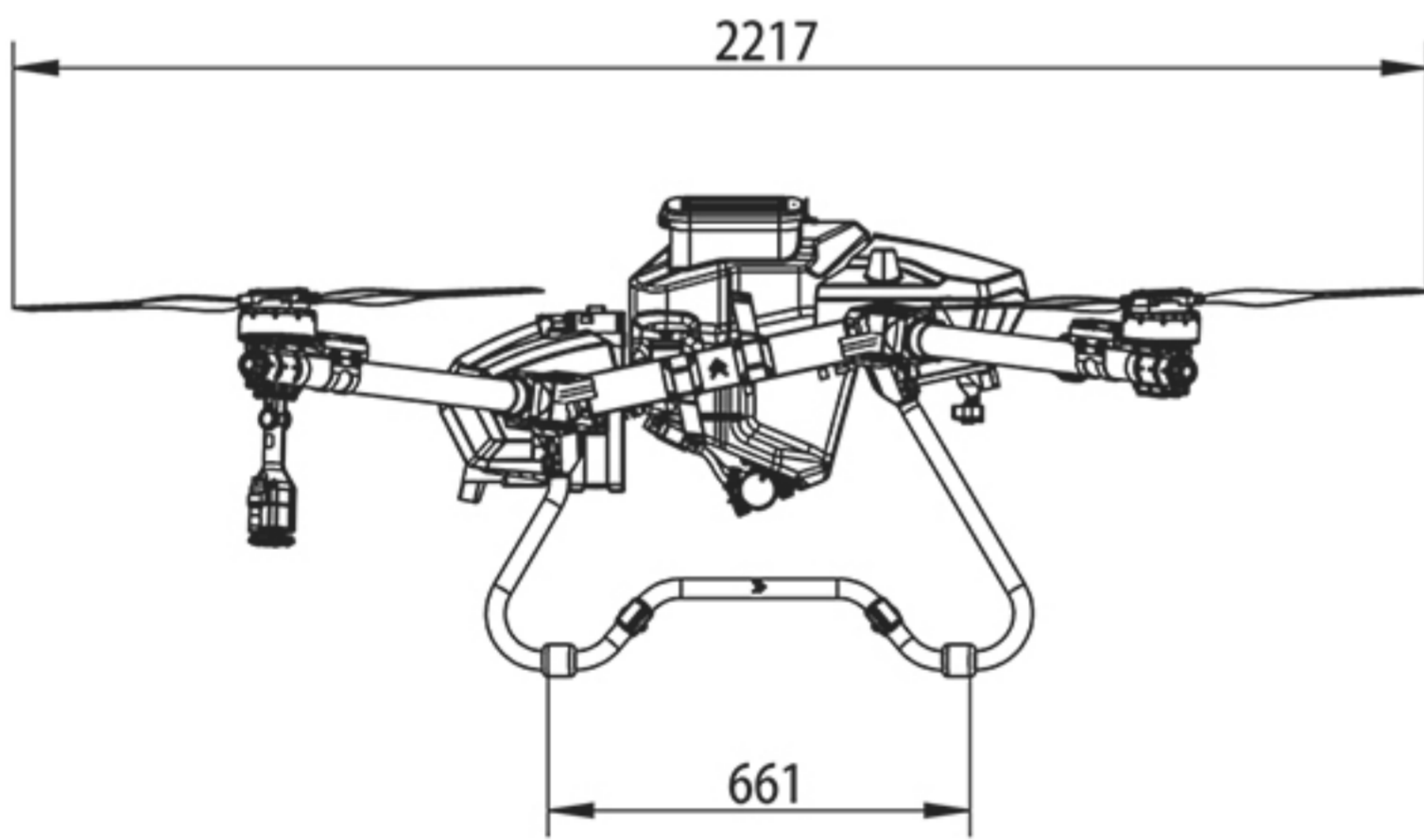
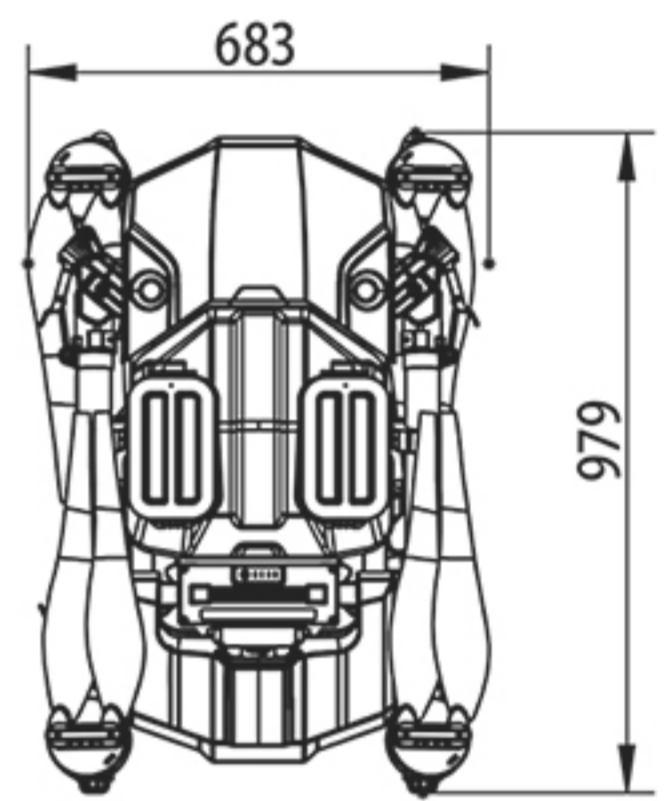
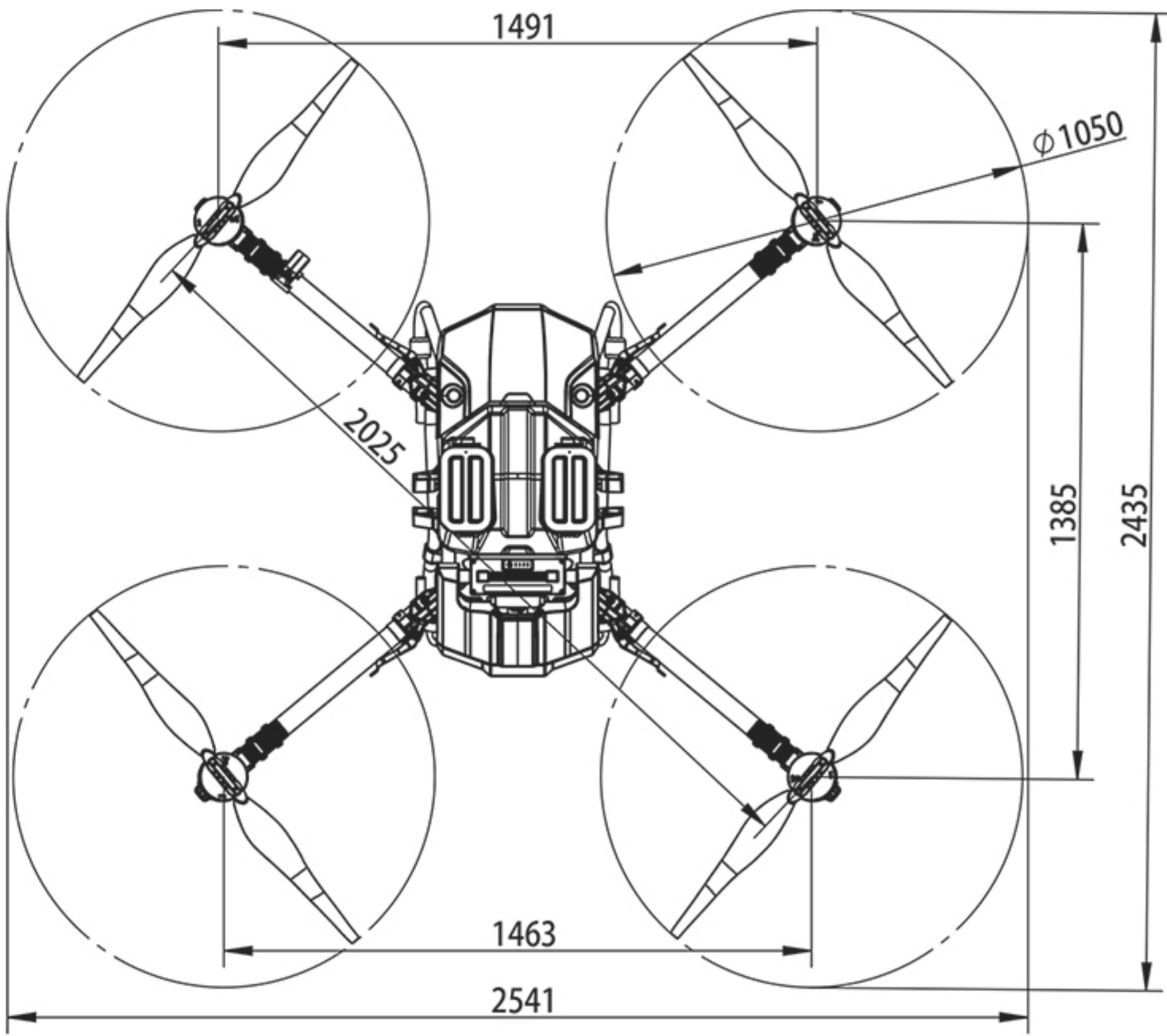
more than 95% of the parts are common.

Which makes it easy to prepare the spare parts and
effectively reduce the maintenance costs.

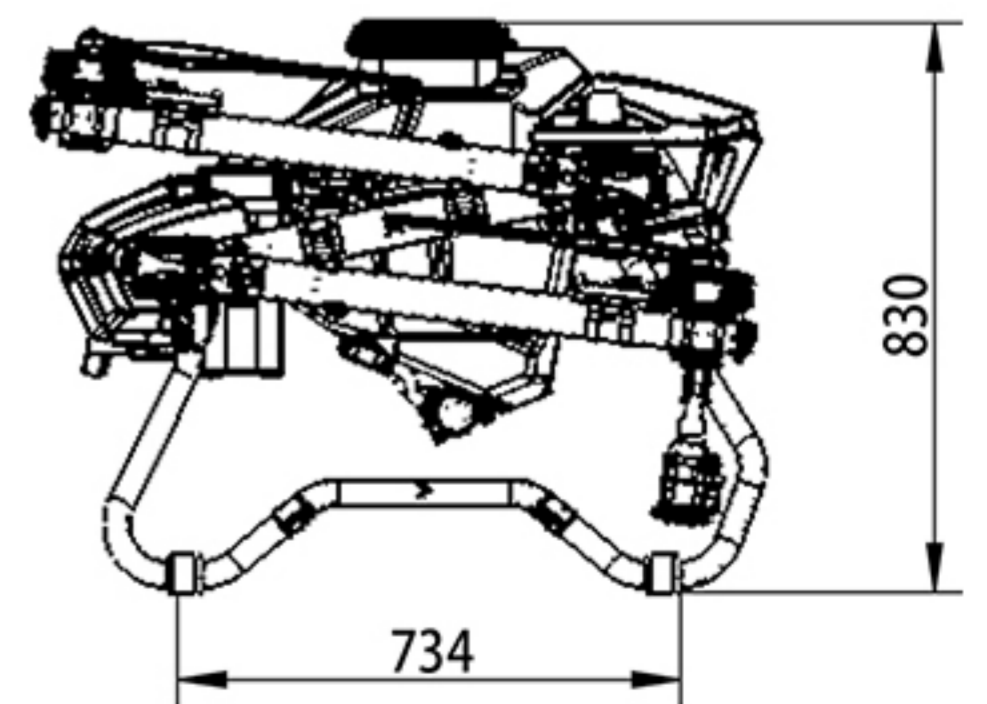
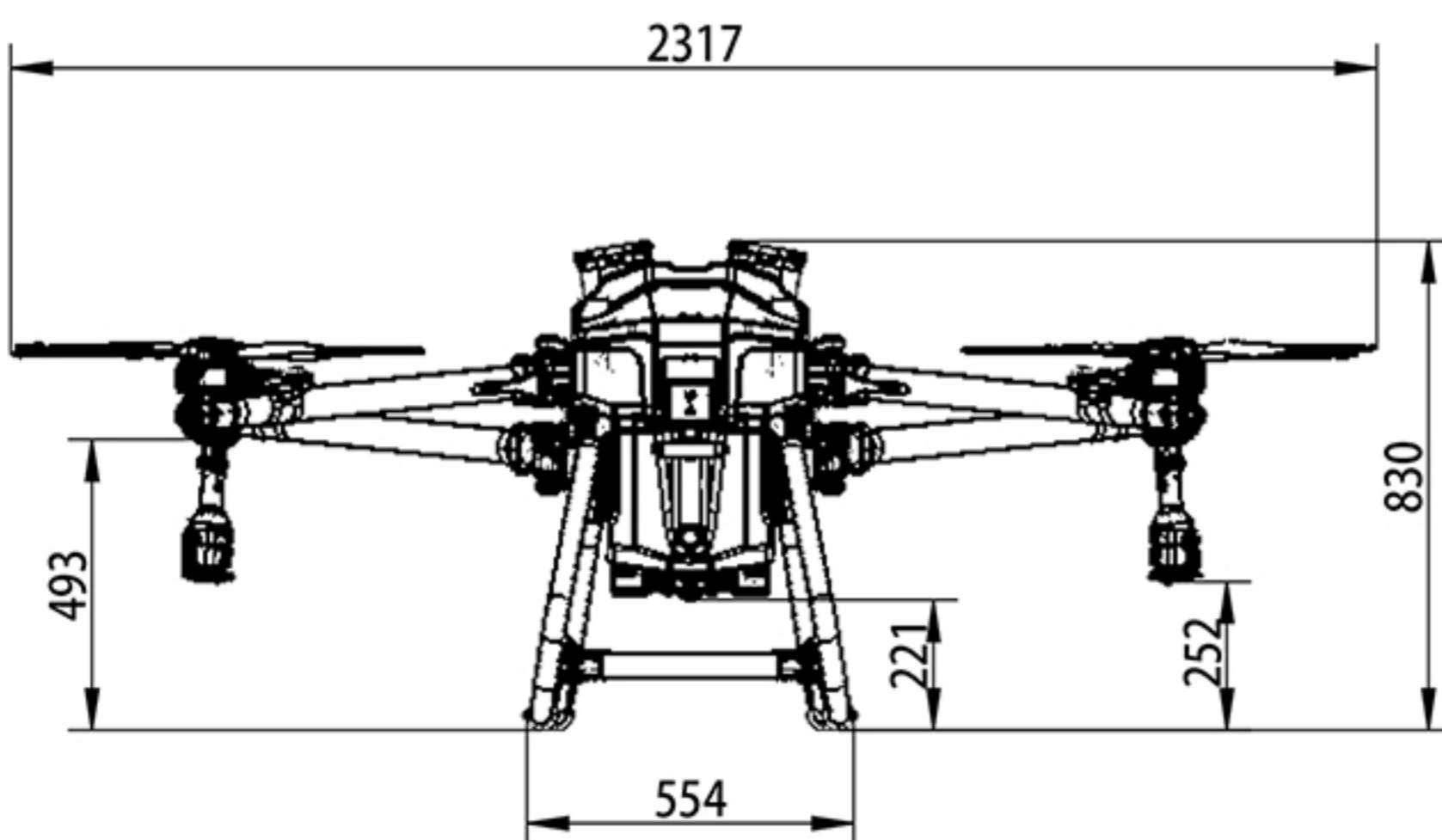
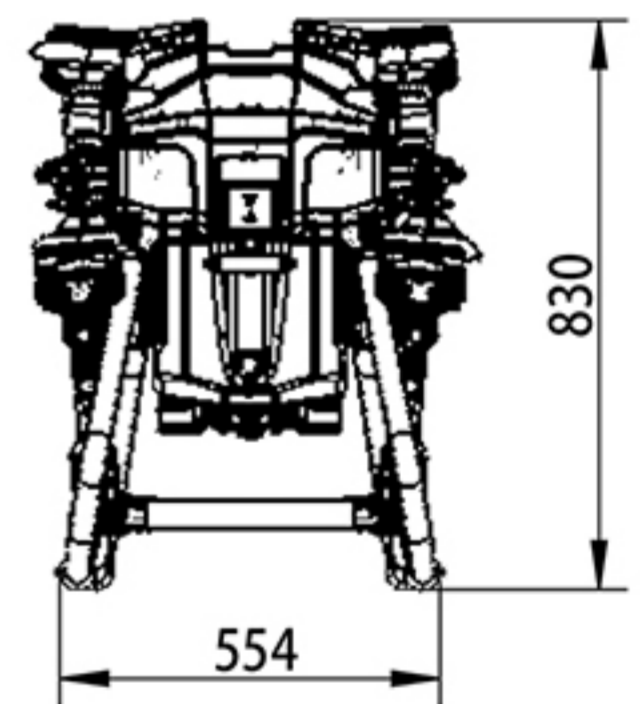
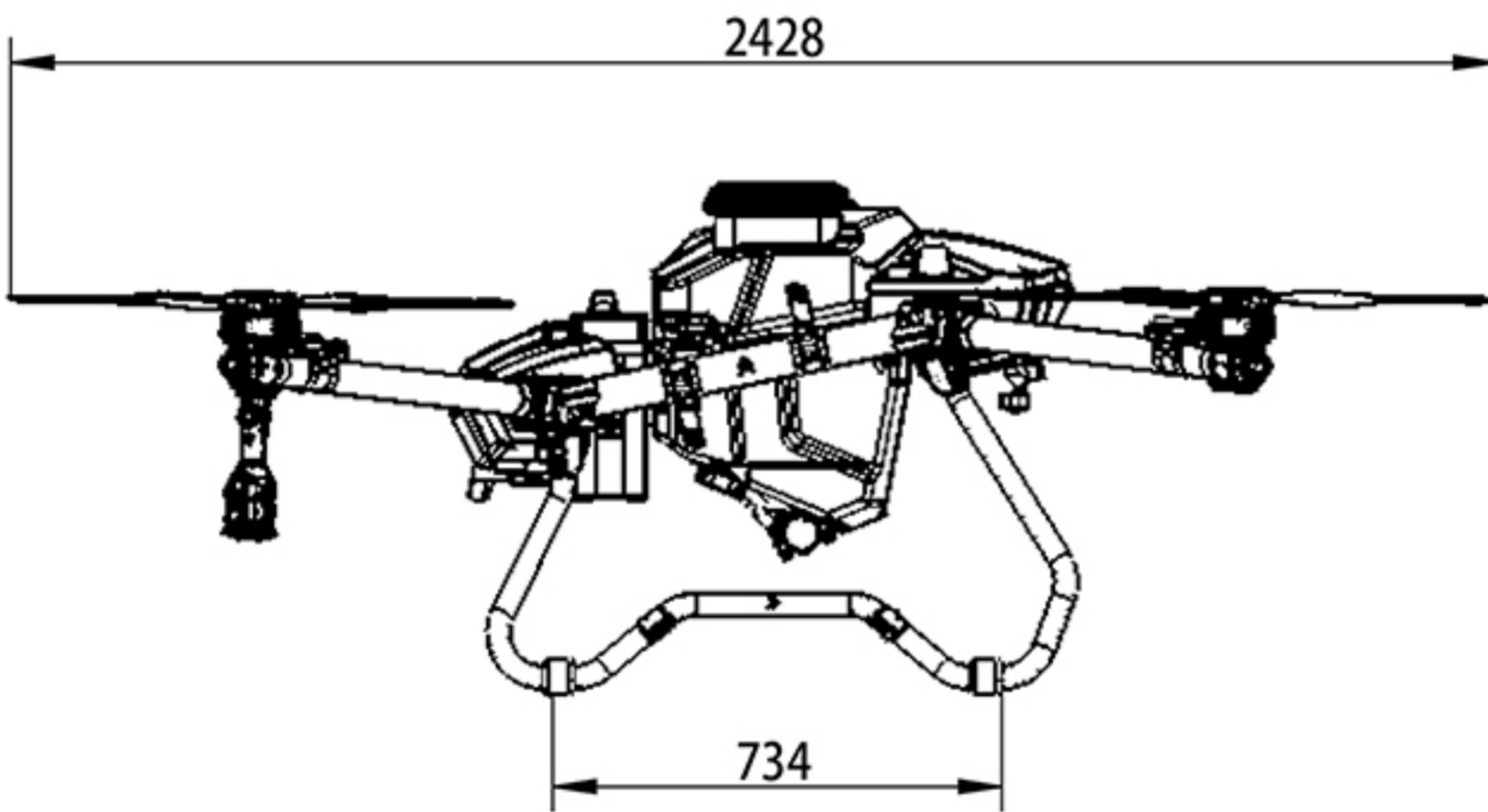
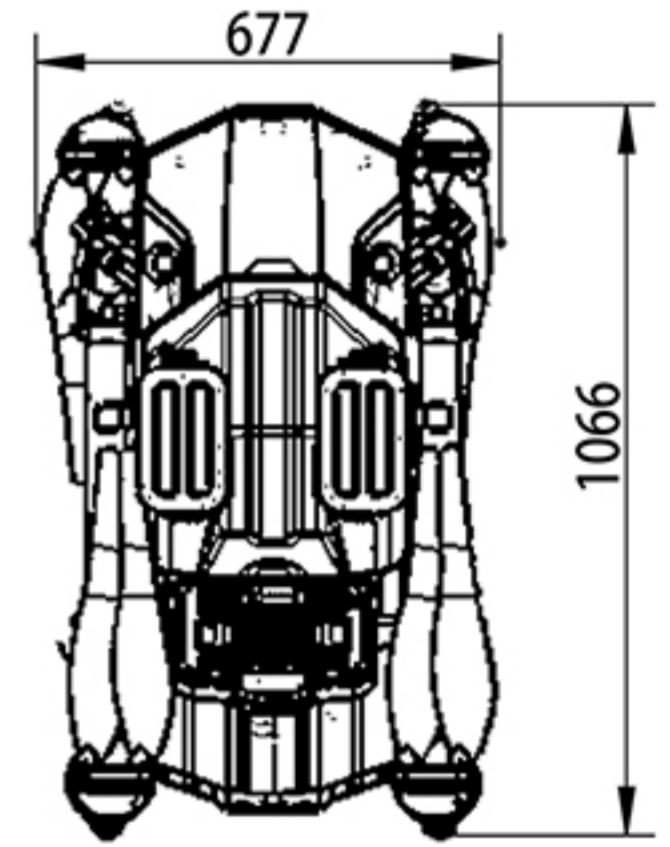
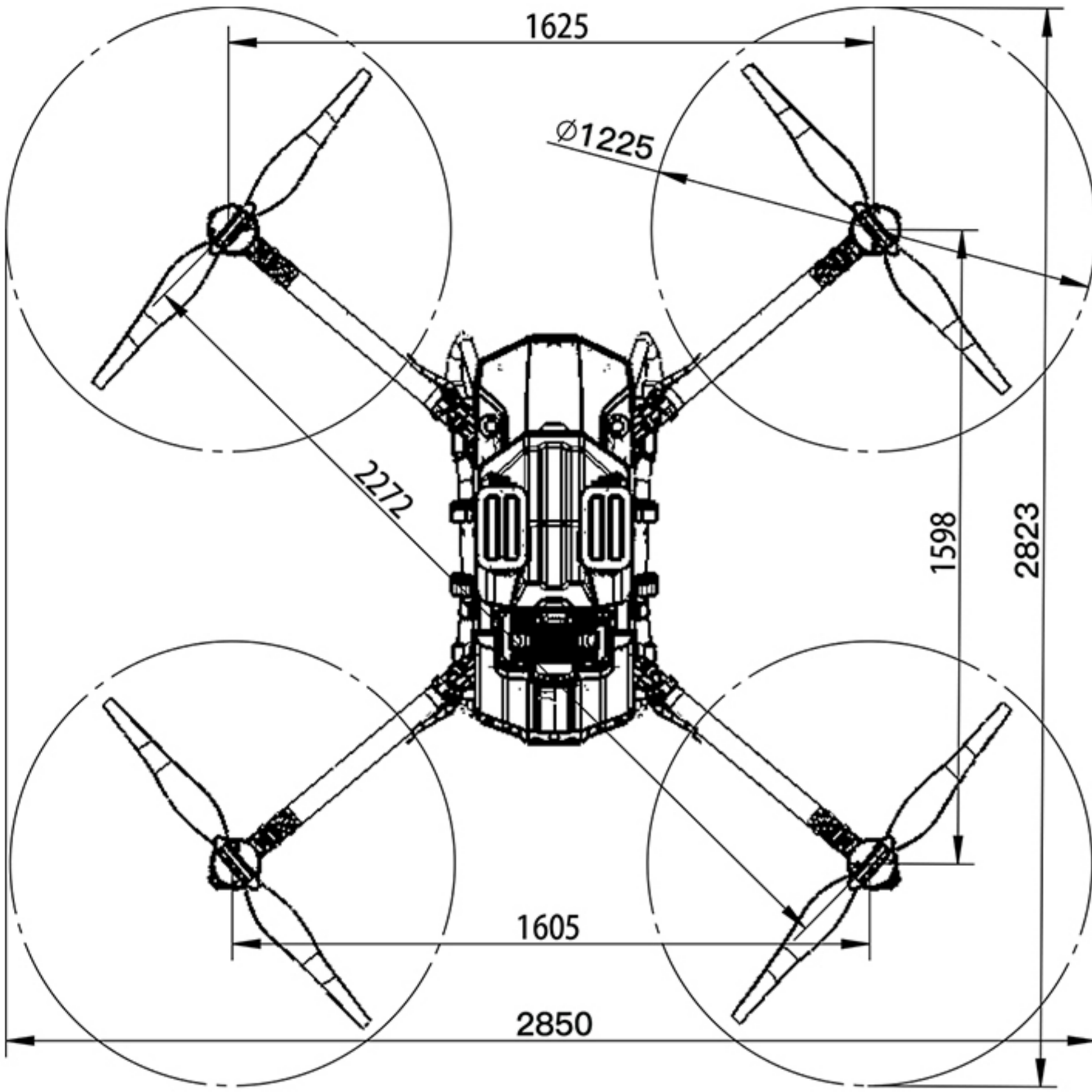
Simplify assembly process and improve production efficiency.



Z30 DIMENSIONS



Z50 DIMENSIONS



Z30 STANDARD PACKAGE



| | |
|--------------------|-----|
| Drone Frame | X 1 |
| Motor Set | X 4 |
| Impeller Pump | X 2 |
| Flow Meter | X 1 |
| Level Gauge | X 1 |
| Centrifugal Nozzle | X 2 |
| Adapter Board | X 1 |
| Pipes and Mittings | X 1 |

| | |
|-----------------------|-----|
| Flight Control Module | X 1 |
| Receiver | X 1 |
| RTK Module | X 1 |
| Front Radar | X 1 |
| Rear Radar | X 1 |
| Altitude Radar | X 1 |
| Camera | X 1 |
| Remote Control | X 1 |

Z30 ADVANCED SET



| | |
|--------------------|-----|
| Drone Frame | X 1 |
| Motor Set | X 4 |
| Impeller Pump | X 2 |
| Flow Meter | X 1 |
| Level Gauge | X 1 |
| Centrifugal Nozzle | X 2 |
| Rear Radar | X 1 |
| Altitude radar | X 1 |

| | |
|-----------------------|-----|
| Adapter Board | X 1 |
| Pipes and Fittings | X 1 |
| Flight Control Module | X 1 |
| Receiver | X 1 |
| Camera | X 1 |
| Remote Control | X 1 |
| Front radar | X 1 |

Z30 BASIC PACKAGE



| | |
|--------------------|-----|
| Drone Frame | X 1 |
| Motor Set | X 4 |
| Impeller Pump | X 2 |
| Flow Meter | X 1 |
| Level Gauge | X 1 |
| Centrifugal Nozzle | X 2 |

| | |
|-----------------------|-----|
| Adapter Board | X 1 |
| Pipes and Fittings | X 1 |
| Flight Control Module | X 1 |
| Receiver | X 1 |
| Camera | X 1 |
| Remote Control | X 1 |

Z50 STANDARD PACKAGE



| | |
|--------------------|-----|
| Drone Frame | X 1 |
| Motor Set | X 4 |
| Impeller Pump | X 2 |
| Flow Meter | X 1 |
| Level Gauge | X 1 |
| Centrifugal Nozzle | X 2 |
| Adapter Board | X 1 |
| Pipes and Fittings | X 1 |

| | |
|-----------------------|-----|
| Flight Control Module | X 1 |
| Receiver | X 1 |
| RTK Module | X 1 |
| Front Radar | X 1 |
| Rear Radar | X 1 |
| Altitude Radar | X 1 |
| Camera | X 1 |
| Remote Control | X 1 |

Z50 ADVANCED SET



| | |
|--------------------|-----|
| Drone Frame | X 1 |
| Motor Set | X 4 |
| Impeller Pump | X 2 |
| Flow Meter | X 1 |
| Level Gauge | X 1 |
| Centrifugal Nozzle | X 2 |
| Rear Radar | X 1 |
| Altitude radar | X 1 |

| | |
|-----------------------|-----|
| Adapter Board | X 1 |
| Pipes and Fittings | X 1 |
| Flight Control Module | X 1 |
| Receiver | X 1 |
| Camera | X 1 |
| Remote Control | X 1 |
| Front radar | X 1 |

Z50 BASIC PACKAGE



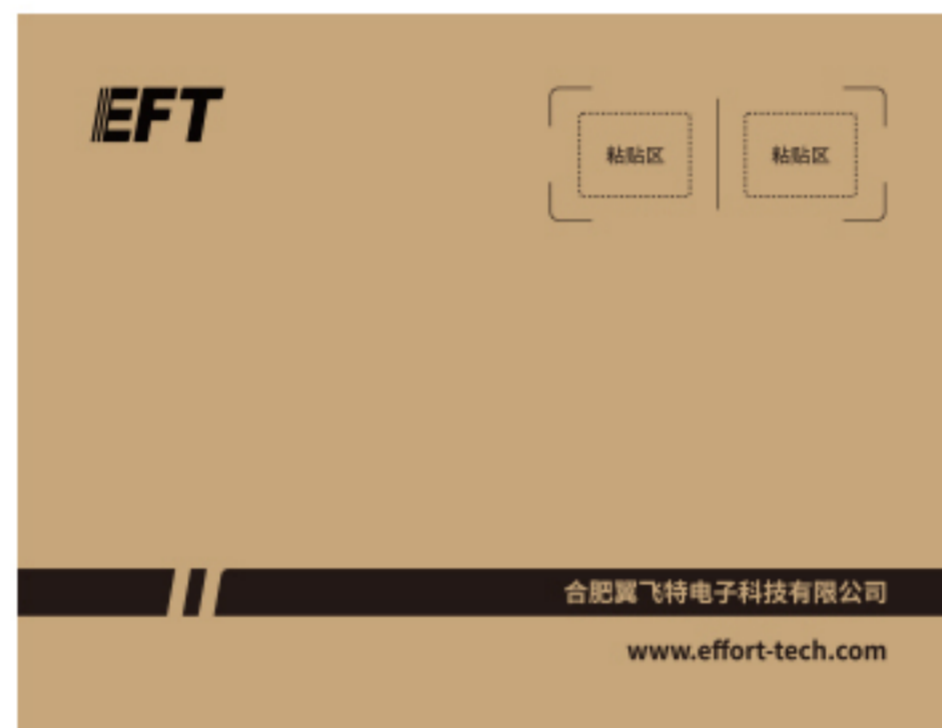
| | |
|--------------------|-----|
| Drone Frame | X 1 |
| Motor Set | X 4 |
| Impeller Pump | X 2 |
| Flow Meter | X 1 |
| Level Gauge | X 1 |
| Centrifugal Nozzle | X 2 |

| | |
|-----------------------|-----|
| Adapter Board | X 1 |
| Pipes and Fittings | X 1 |
| Flight Control Module | X 1 |
| Receiver | X 1 |
| Camera | X 1 |
| Remote Control | X 1 |

Z30 PACKAGE SIZE



Size: 985x670x455mm Weight: 30.85kg



Size: 511x448x390mm Weight: 7.8kg

Z50 PACKAGE SIZE



Size: 1110x690x665mm Weight: 32.55kg



Size: 625mmx415x448mm Weight: 8.65kg